

Welcome to The Cotteridge Church

Sunday 27th February 2022 Transfiguration

"The calling of The Cotteridge Church is to respond to the Gospel of God's love in Christ and to live out its discipleship in worship and mission."

Prayer of the Day

You know the disorder of our sinful lives:
set straight our crooked hearts,
and bend our wills to love your goodness
and your glory
in Jesus Christ our Lord. Holy God.
Amen

Sunday 27th February 2022 Transfiguration

10.30 Holy Communion

Barbara Calvert

Hymns 11, 20, 585, 55

Readers Mike M

Readings Exodus 34 29-35 Luke 9 38-43

Organ Kadeem Duncan

Prayer Column

We pray for our pastoral links:

Rita S. with Elsa C, Joan C, Bob H, and Ivor R.

Tim and Sue C. with John C, Hazel F, Suzy H,

Peter R, Helen S, Pam W, Susan S, and Miriam T.

We pray for those who are housebound and those in long term need :

Jackie J, Moira J, Joan C, Gill and Len S and Rod S, Myra D, Chris M, Beryl H, Keith and Mary K, Jennifer M

We pray for those who are ill or are in particular need of prayer:

Megan, Vinnie H, Mark T, Keith, Robin, Shirley, Jenny F Paul S. David W, Norman and Philomena , Ivor R Steven W. Hazel N. Ken F.

We remember those who he died:

Coffee Bar 8.30 to 1.30 weekdays

Tuesday 1st March

10.00am Holy Communion Mike Claridge

2.00pm Dementia Support Group

Wednesday 2nd March

3.00pm Youth Café

7.30pm. Worship zoom

Thursday 3rd March

10.30 Knit and Natter

6.30 Choir Practice

Friday 4th March

1.30pm. World Day of Prayer



6.30pm. Boys Brigade

Services Next Sunday

6th March Lent 1

10.00am Video Reflection ([YouTube](#))

10.30am Morning Worship Mike Claridge

6.30pm Lent Study Course Caring for Creation

Church Council Photographs

are now on NOTICE BOARD B

Flowers this week have been donated by June Gregory...thank you June.

Lent begins on Ash Wednesday March 2nd so there will not be any flowers in church on a regular basis until Easter. An exception will be flowers in the church on Mothering Sunday to celebrate that special day.. Thank you Everyone for all your support

Sandra Walton

Offertory

Please remember stewards will bring around the offertory plate during one of the hymns which will then be offered with a prayer.

FUTURE EVENTS

Saturday 4th June Platinum Jubilee Celebration Summer Fayre and Garden Party 1.30 to 4.30PM

Saturday 25th June Away Day to be lead by Deacon **Kerry Scarlett** who is a Learning & Development Officer for the West Midlands region. Kerry is a Methodist Deacon who previously was a Tutor within the Centre for Ministerial Formation at the Queen's Foundation. Prior to this, Kerry's appointments included circuit ministry, workplace chaplaincy, and the development of the West Midlands Anti-Slavery Network and the Adavu Project, a Birmingham District project supporting survivors of modern slavery.

URC 50th Anniversary Saturday 1st October 22
see URC website for full details

Please ensure that all notices reach me by midnight on Thursday

revroger.collins@thecotteridgechurch.org.uk

Lent Course Caring for Creation

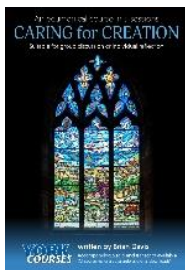
Sundays 6.30-7.30

Sunday 6th March 13th 20th 27th 3rd April

Tuesdays 11.00-12.00

Tuesday 8th March 15th 22nd 29th 5th April

1. Environment
 2. Global Warming and Climate Change
 3. Age of Humans
 4. Coming out of Denial and Facing Crisis
 5. Faith Hope and Love
- Course Booklet £3.80 available from the bookcentre



Debbie tracey Sharon Lucy Charlie Matthew

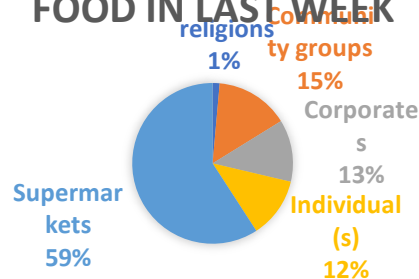
Although we have a new name B30 and South Birmingham Foodbank we are still part of the Trussell Trust. The main advantage is that we now our own charity number rather than have to rely on the Churches Number.

We received in 1623k of food and gave out 2083kgs feeding 201 clients on 91 vouchers

Urgently needed



FOOD IN LAST WEEK



Cotteridge Church Book Centre YOUR LAST CHANCE IN DATE INSTANT COFFEE AT THESE AMAZING PRICES

Café direct 460 100g now 230

500g 24.90 now 12.45

Machu picchu 200 7.50 now 3.75

Traidcraft decaf 100g 5.50 now 2.50

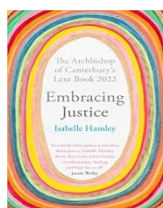
Traidcraft coffee 100 5.00 now 2,50

Card Payments now accepted.

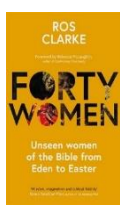
For Orders

Jane on 07800815074 or Roger on 07721 526854

A selection of LENTEN Reading



8.99



9.99



9.99



**The Real Easter Egg
NOW AVAILBLE £5.00**

Chocolate Ginger now back in stock
Christmas Tree Chocolate Biscuits 1.99 unavailable before Christmas only 4 boxes left.

Lent Books and Lent Course are now available
The Spring Catalogue is now available
please ask

Long life fruit juice, squash, Sugar 500g (not larger), teabags (40's or 80's), gender neutral shampoo, single or duo wrapped toothbrushes, toothpaste, size 5 nappies, crisps, dog/cat food

Low in stock

UHT semi-skimmed milk, UHT whole milk, tinned rice pudding, tinned tomatoes, jam/honey, instant coffee (not decaffeinated), rice, tinned potatoes, ready-made custard (tinned or carton - not powder) laundry power/liquid (not family sized), tinned spaghetti, chocolate and snack bars, tinned/packet vegetarian meal, strong carrier bags, toilet rolls.

Well stocked

Tinned fish, cereal (not greater than 500g), pasta sauce, tinned meat (ham, corned beef, pork sandwich, pulled pork, pulled chicken, tinned fruit in juice (not prunes or grapefruit), instant hot chocolate (not cocoa powder), baked beans, pasta shapes, dry spaghetti, tinned/packet soup, tinned vegetables, biscuits, nappies all sizes, baby food and baby care items, gender neutral shower gel, liquid/bar soap, roll-on deodorants, sanitary pads, baby wipes, porridge, noodles, instant potato, washing-up liquid

Not needed at all

Decaffeinated drinks or fruit infusions, bottled water, large bottles of lemonade or coke, any food or toiletries containing alcohol, cooking ingredient or sauces, tinned macaroni cheese, fresh products (including vegetable, meat, eggs and bread), non-dairy items, gluten-free items, coffee beans, loose tea, large boxes of teabags (120's or more), very large bags or boxes of porridge and cereal, cocoa power, tampons, make up hair accessories, perfume or aftershave, Christmas items

Clients needing emergency food are referred to B30Foodbank by E-Voucher through a referral agent. Or call CITIZENS ADVICE 08082082138 Or call BIRMINGHAM CITY COUNCIL on 0121 216 3030 **email info@b30.foodbank.org.uk**

Distribution of food Clients or their representatives will need to collect the parcels from B30Foodbank, Quaker Friends Meeting House 23aWatford Road B30 1JB on Tuesday and Friday between 1.30 and 3.30pm

DONATIONS to the B30Foodbank at the Warehouse 17 Castle Road B30 3HZ on Tuesday and Fridays between 2.00 - 4.00p.m,

PHONE LINES FOR CLIENTS 07582 143 972

FOR DONATIONS 07985 629 201