

ACT ON POVERTY the sessions are

1. Prophetic

[this pack](#) looks at what it means for churches to speak prophetically. The Bible shows us that being a prophet is far from easy. Many prophets have felt powerless, despite being called by God to speak out. How, with God's help, can your church develop its prophetic voice when speaking about poverty?

2. Broken

We are increasingly aware of the divisiveness of politics in the UK today. But this is not the only place where there is division. Our churches, our world, our selves are all in need of redemption and repair. [This pack](#) helps you discuss division and brokenness in our different contexts. The resource opens up space to think together about where repentance is needed, and how we can be part of God's healing and redeeming work

3. Generous

Many people in the UK are having to tighten their belts due to the cost-of-living crisis. In this pack we take a close look at the lived experience of poverty, both near to home and around the world. We explore poverty as a justice issue that demands action. Churches can explore what it might mean to be 'generous' or 'cheerful givers' (2 Corinthians 9.7) when we feel like we have nothing to spare. What gifts do we have that we can share?

4. Located

Beginning with reflections on where Jesus chose to place himself during his ministry, this pack equips your church to look afresh at where you are located. This includes your physical environment, community resources, local concerns and priorities. Groups can explore questions about how we discern what God is already doing in our community, about life on the margins, and who has power in your locality.

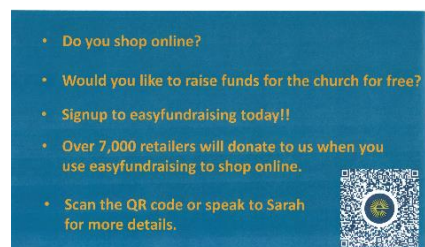
5. Hopeful this pack helps churches outline their hopes for the future and turn these hopes into a manifesto for action. There are practical ideas about facilitating events and community discussion in the lead up to the General Election. And there's an exploration of how nurturing hope can be part of our calling to love our neighbour. What will your church do to grow hope in 2024?



COFFEE BAR
MONDAY TO FRIDAY 8.30 TO 1.30
SATURDAY

10.00-12.00

The Cotteridge Church
Minister Mike Claridge 0121 433 5176
Assistant Priest Roger Collins 07721526854
Church Administrator Sarah Canning
Church telephone 0121 433 5518



Sunday 11th FEBRUARY
10.30am Holy Communion
Roger Collins

Holy God,
you know the disorder of our sinful lives
:set straight our crooked hearts,
and bend our wills to love your
goodness and your glory in Jesus Christ
our Lord.

Hymns

Readings 2 Corinthians 4 3-6

Mark 9 2-9

Readers Janet H Celia L

Music Bill C

Sound Jane S

Activity bags for young children are available from the stewards

We remember our pastoral links

Rita S with Elsa C and Bob H
Tim and Sue C with John C Hazel F
Alastair and Clare G, Suzy H, Peter R
Helen S Miriam T and Pam W

Those in long term need Jenny F,
Marion and David W, Norman and
Philomena, Ken F Lauren D, Geoff W,
Lyn, FriedL Dorothy T, Sue S, Maurice W

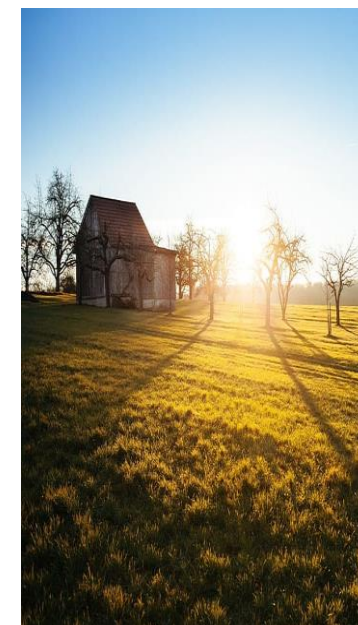
Prayer Cards

Sally and Bernie, Lesley D

We pray for those who have died

Hazel Nash Fiona W

The calling of The Cotteridge Church to respond to the Gospel of God's love in Christ and to live out its discipleship in worship and mission.



This notice sheet is prepared by Roger to whom notices should be sent
revrogercollins@thecotteridgechurch.org.uk

Calendar

SCHOOLS HALFTERM

Tuesday 13th February

10.00 Holy Communion Mike Claridge
2.00 Fellowship music cds
12.00 POD tuition
6.00 Datus

Wednesday 14th February

Ash Wednesday

7.30 Ash Wednesday Worship Zoom

Thursday 15th February

10.00 Kinross
10.30 Cotteridge Crafters

Satur17th February

10.30 MPS surgery
1.00 Midland Historic Postal Society
1.00 Cotteridge Walkers

Sunday 18th February

LENT 1
10.30 Morning Worship
Mike Claridge

Sunday 10th March

Mothering Sunday
24th March Holy Week
Palm Sunday
28th March

Maundy Thursday
29th March Good Friday

30th March Easter Saturday

Sunday 31st March Easter Sunday

Christian Aid Week 12-18th May

Please remember to return questionnaires by Sunday

Future Events

Friday 1st March 2024

WORLD DAY OF PRAYER.

I beg you, bear with one another in love. This is the theme of this year's Day of Prayer when we concentrate on Palestine. The Service will be at St. Nicholas Church, Kings Norton. Friday March 1st. 1.30 & 7pm. Everyone welcome. Refreshments served after the services.

Pastoral Links Meeting

On Saturday 16th March there will be a Pastoral Links meeting, led by Rev Mike Claridge, time to be confirmed.

Strategy Group

On Sunday 17th March a light lunch will be provided for you to comment on the Mission and Vision paper or in writing if you prefer

Lent Groups

"This Lent we are using the Christian Aid material called 'Act on Poverty'. There will be a choice of sessions either Sunday evenings at 7.00pm or Tuesday mornings at 10.30am. Each will last from 45 mins to an hour (maximum!) If you would like a sample the first session it is available here. <https://www.christianaid.org.uk/get-involved/campaigns/act-on-poverty-session-one-prophetic>. Come along and enjoy an informal discussion!
18th and 20th Feb - Mike
25th and 27th Feb - Roger
3rd and 5th Mar - Mike
10th and 12th Mar - Mike
17th and 19th Mar - Roger

Flowers

Flowers arranged today by Linda W in memory of Audrey Woodhouse

BOOKCENTRE

recommended Lent reading.

9.99

10.99



A new selection of Easter Cards are now available

Zaytoon is a non-profit company established to support marginalised farming communities in Palestine through the production of olive oil and other olive products. Olive oil £15.50 and dates £5.90 soap are now back in stock



Toilet Rolls 1.05 Paper Towels £2.65
Tissues 1.58

Coffee Cafedirect

Fairtrade Mayan Gold Instant £6.35
Fairtrade Macchu Picchu decaff £5.75
Fair trade Macchu Picchu Instant 6.35
Fairtrade Ground 5.75
Fair trade Tea 4.99

B30 and South Birmingham Foodbank

Last week we received in 3049k and gave out 2555k feeding 276 clients on 132 vouchers



Mary from Diamond District
Tom from Franklin Road
Heather from Adult education Services

Urgently needed

Tinned fruit (in juice - not prunes, grapefruit or rhubarb), tinned meat (ham, corned beef, pork sandwich, pulled pork, chicken pasta sauce, rice (500g), tinned fish (tuna, mackerel, sardines), jam/honey, chocolate bars, tinned rice pudding, instant hot chocolate (not cocoa powder), cereal (not greater than 500g), UHT semi-skimmed milk, tinned/carton ready-made custard, toothpaste, liquid/bar soap, laundry liquid/powder (not family-sized), sanitary pads

During January the B30 and South Birmingham foodbank feed 1264 clients on 611 Vouchers